

## ALBERT VAN ABBE TECHNICAL RIDER 2024

**@ SOUND TECHNICIAN. PLEASE CHECK IF BOOKED FOR A LIVE OR DJ PERFORMANCE!**

### DJ PERFORMANCE ALBERT VAN ABBE:

Allen & Heath XONE 92 or XONE 96 / **No Pioneer please.**

**3X Pioneer CDJ 2000 NXS2 or 3000. No less then 3 players.**

**CDJ's must be updated + linked + player number assigned.**

**Enough space left of the setup for my drummachine (elektron analog rytım).**

High quality adjustable stereo monitor system (on wheels) ideally made up out of the same elements as the main PA.

Powerful stereo PA system with sufficient sub-bass amplification down to 30 Hz.

Setup and tear-down time 10 minutes minimum.

Access to back of the DJ mixer to connect recording device and drummachine.

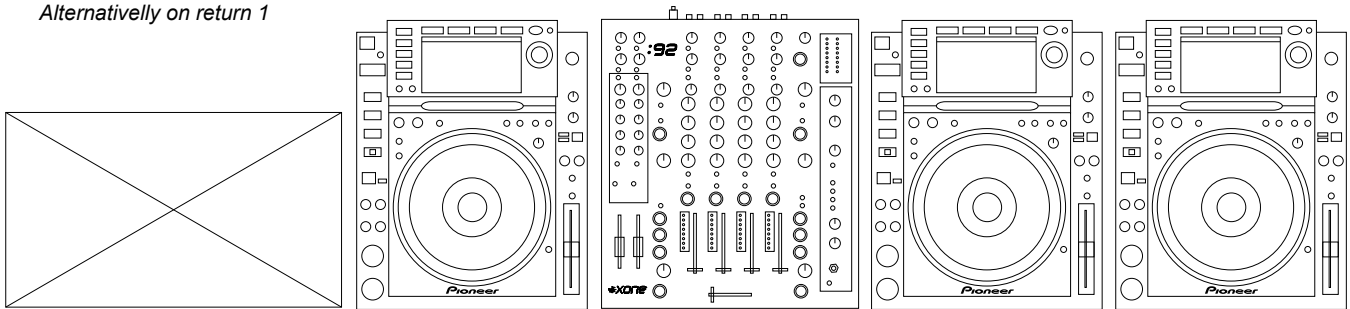
### DJ SETUP LIKE BELOW:

*Drummachine on channel 1  
Alternatively on return 1*

*CDJ on channel 2*

*CDJ on channel 3*

*CDJ on channel 4*



### LIVE PERFORMANCE ALBERT VAN ABBE:

Allen & Heath XONE 92 or XONE 96 (dedicated to this live performance).

**1X Pioneer CDJ 2000 NXS2 or 3000.**

1X Laptop stand.

**Table / Space 1m high / 1.5m wide / 1m deep.**

At least 8 Power sockets [220volt].

High quality adjustable stereo monitor system (on wheels) ideally made up out of the same elements as the main PA.

Powerful stereo PA system with sufficient sub-bass amplification down to 30 Hz.

**Sound technician available during sound-check and performance.**

Setup and tear-down time 45 minutes minimum.

### LIVE AUDIOVISUAL PERFORMANCE ALBERT VAN ABBE:

**See Live performance +**

Setup and tear-down time 90 minutes minimum.

Table / Space 1m high / 2m wide / 1m deep.

DisplayPort (preferred) or HDMI connection to projector / screen.

4K compact monitor which is able to lay flat.

**Contact agent in case of any questions.**

### LIVE PERFORMANCE PENIK ETTEK:

Minimum 16 channel Live PA mixer (Midas Venice F/U 16 or 24 preferred!)

Table / Space 1m high / 2m wide / 1m deep.

At least 8 Power sockets [220volt].

High quality adjustable stereo monitor system (on wheels) ideally made up out of the same elements as the main PA.

Powerful stereo PA system with sufficient sub-bass amplification down to 30 Hz.

Sound technician available during sound-check and performance.

Setup and tear-down time 45 minutes minimum.

Soundcheck 90 minutes minimum.

**Also note: 2 flights / 2 rooms.**

### OTHERS / HOSPITALITY:

Bottles of soda water on stage. Recordings are not allowed without written approval.