

## ALBERT VAN ABBE TECHNICAL RIDER 2022

**@ SOUND TECHNICIAN. PLEASE CHECK IF BOOKED FOR A LIVE OR DJ PERFORMANCE!**

### DJ PERFORMANCE ALBERT VAN ABBE:

Allen & Heath XONE 92 or XONE 96 / **No Pioneer please.**

**3X Pioneer CDJ 2000 NXS2 or 3000. No less then 3 players.**

**CDJ's must be updated + linked + player number assigned.**

**Enough space left of the setup for my drummachine (elektron analog rytym).**

High quality adjustable stereo monitor system (on wheels) ideally made up out of the same elements as the main PA.

Powerful stereo PA system with sufficient sub-bass amplification down to 30 Hz.

Setup and tear-down time 10 minutes minimum.

Access to back of the DJ mixer to connect recording device and drummachine.

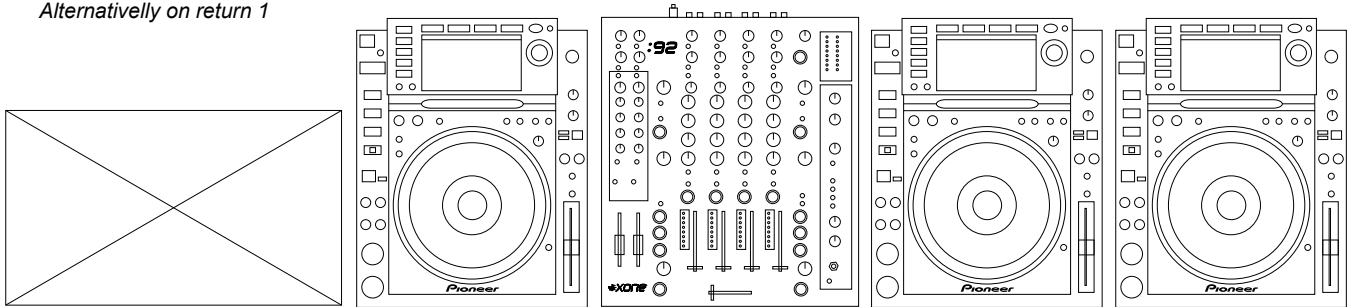
### DJ SETUP LIKE BELOW:

*Drummachine on channel 1  
Alternatively on return 1*

*CDJ on channel 2*

*CDJ on channel 3*

*CDJ on channel 4*



### LIVE PERFORMANCE ALBERT VAN ABBE:

1 stereo line input on the DJ mixer, an Allen & Heath XONE 92 or XONE 96 / **No Pioneer please.**

**Table / Space 1m high / 2m wide / 1m deep.**

At least 6 Power sockets [220volt].

High quality adjustable stereo monitor system (on wheels) ideally made up out of the same elements as the main PA.

Powerful stereo PA system with sufficient sub-bass amplification down to 30 Hz.

**Sound technician available during sound-check and performance.**

Setup and tear-down time 45 minutes minimum.

### LIVE AUDIOVISUAL PERFORMANCE ALBERT VAN ABBE:

#### See Live performance +

Setup and tear-down time 90 minutes minimum.

Table / Space 1m high / 2m wide / 1m deep.

DisplayPort (preferred) or HDMI connection to projector / screen.

4K compact monitor which is able to lay flat.

**Contact agent in case of any questions.**

### SUPPLIED BY MYSELF [LIVE PERFORMANCE ALBERT VAN ABBE]:

Laptop

Controllers

RME Fireface 400UC.

Elektron Analog Rytym.

Modular synthesizer case.

Audio cables

PC + controllers (incase of Live Audiovisual Performance)

### LIVE PERFORMANCE PENIK ETEK:

Minimum 16 channel Live PA mixer (Midas Venice F/U 16 or 24 preferred!)

Table / Space 1m high / 3m wide / 1m deep.

At least 8 Power sockets [220volt].

High quality adjustable stereo monitor system (on wheels) ideally made up out of the same elements as the main PA.

Powerful stereo PA system with sufficient sub-bass amplification down to 30 Hz.

Sound technician available during sound-check and performance.

Setup and tear-down time 45 minutes minimum.

Soundcheck 90 minutes minimum.

**Also note: 2 flights / 2 rooms.**

### OTHERS / HOSPITALITY:

Bottles of soda water on stage. Lighting conditions: a minimum of lights. Recordings are not allowed without written approval.