

ALBERT VAN ABBE (+ ALIASES) TECHNICAL RIDER 2022

>> @ SOUND TECHNICIAN. PLEASE CHECK IF BOOKED FOR A LIVE OR DJ PERFORMANCE!

DJ / HYBRID LIVE PERFORMANCE ALBERT VAN ABBE:

Allen & Heath XONE 92 or XONE 96 / **No Pioneer please.**

3X Pioneer CDJ 2000 NEXUS / NXS 2 or 3000.

CDJ's must be updated + linked + player number assigned.

Enough space left of the setup for my drummachine (elektron analog rytym).

High quality adjustable stereo monitor system.

Powerful stereo PA system with sufficient sub-bass amplification down to 30 Hz.

Setup and tear-down time 10 minutes minimum.

Access to back of the DJ mixer to connect recording device and drummachine.

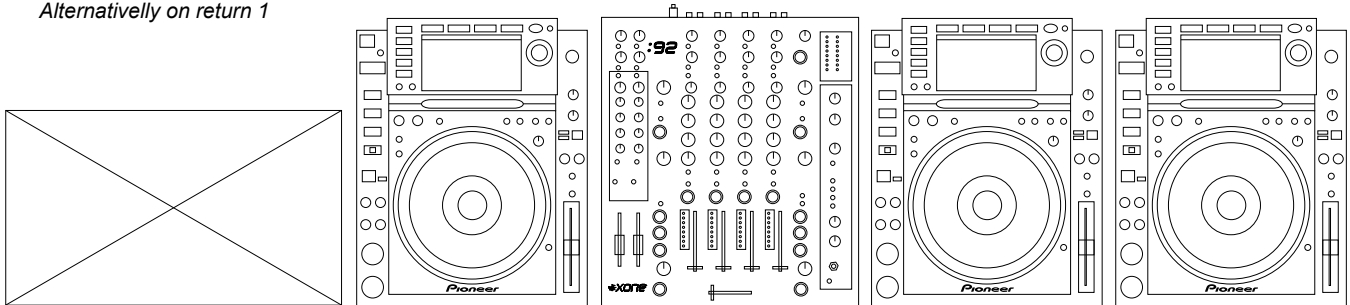
DJ SETUP LIKE BELOW:

*Drummachine on channel 1
Alternatively on return 1*

CDJ on channel 2

CDJ on channel 3

CDJ on channel 4



LIVE PERFORMANCE ALBERT VAN ABBE:

1 stereo line input on the DJ mixer, an Allen & Heath XONE 92 or XONE 96 / **No Pioneer please.** Or directly to the front of house.

Table / Space 1m high / 2m wide / 1m deep.

At least 6 Power sockets [220volt].

High quality adjustable stereo monitor system.

Powerful stereo PA system with sufficient sub-bass amplification down to 30 Hz.

Sound technician available during sound-check and performance.

Setup and tear-down time 45 minutes minimum.

LIVE AUDIOVISUAL PERFORMANCE ALBERT VAN ABBE:

See Live performance +

Setup and tear-down time 90 minutes minimum.

Table / Space 1m high / 2.5m wide / 1m deep.

DisplayPort (preferred) or HDMI connection to projector / screen.

4K compact monitor which is able to lay flat.

Contact agent in case of any questions.

SUPPLIED BY MYSELF [LIVE PERFORMANCE ALBERT VAN ABBE]:

Laptop

Controllers

RME Fireface 400UC.

Elektron Analog Rytym.

Intellijel Modular case.

Audio cables

PC + controllers (incase of Live Audiovisual Performance)

LIVE PERFORMANCE PENIK ETTEK:

Minimum 16 channel Live PA mixer (Midas Venice F/U 16 or 24 preferred!)

Table / Space 1m high / 3m wide / 1m deep.

At least 8 Power sockets [220volt].

High quality adjustable stereo monitor system.

Powerful stereo PA system with sufficient sub-bass amplification down to 30 Hz.

Sound technician available during sound-check and performance.

Setup and tear-down time 45 minutes minimum.

Soundcheck 90 minutes minimum.

Also note: 2 flights / 2 rooms.

OTHERS / HOSPITALITY:

Bottles of soda water on stage. Lighting conditions: a minimum of lights.