

Albert van Abbe / Technical rider / 2018

@THE SOUND TECHNICIAN. PLEASE CHECK IF BOOKED FOR A LIVE OR DJ PERFORMANCE.

DJ performance:

Allen & Heath XONE: 92 / **No Pioneer please.**

3X Pioneer CDJ 2000 NEXUS or NXS 2 + 1 Technics 1200 / 1210 mk2.

CDJ's must be linked + player number assigned!

Sufficient isolation for the Technics 1200! Please check for feedback!

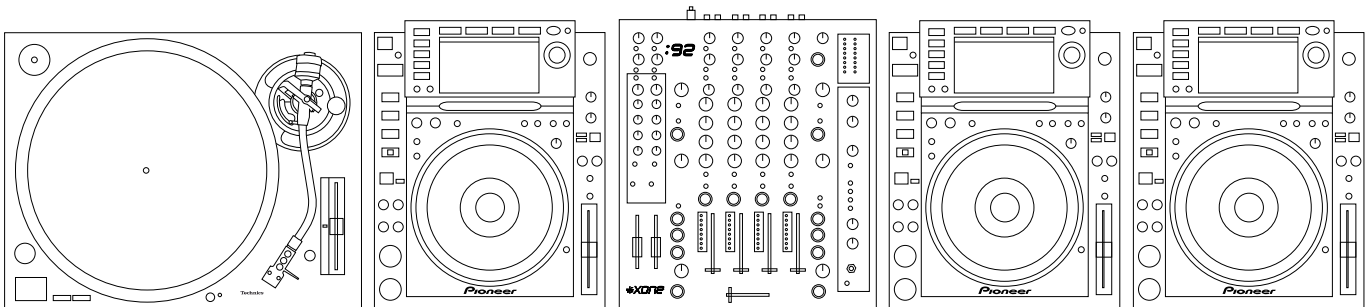
High quality adjustable stereo monitor system.

Powerful stereo PA system with sufficient sub-bass amplification down to 30 Hz.

Setup and tear-down time 10 minutes minimum.

Access to back of DJ mixer to connect recording device and / or effect unit.

DJ setup like below:



Live performance:

1 stereo line input on the DJ mixer, an Allen & Heath XONE: 92 / **No Pioneer please.**

/ or 1 Stereo input **direct** to crossover / amplifiers. **Monitor levels must be adjustable.** My output level is limited to 0dB.

Table / Space 1m high / 2,5m wide / 1,2m deep.

At least 6 Power sockets [220volt].

High quality adjustable stereo monitor system.

Powerful stereo PA system with sufficient sub-bass amplification down to 30 Hz.

Sound technician available during sound-check and performance.

Setup and tear-down time 45 minutes minimum.

Live A/V performance:

See Live performance +

No Video / Light check = no show.

No Sound-check = no show.

Table 1m wide / 1,2m deep In addition to the Live (sound) performance.

All details must be discussed with the agent!

Supplied by myself [Live performance]:

Laptop

Controllers

RME Fireface 400UC.

Elektron Analog Rytm.

Intellijel Modular case (optional).

Make Noise Modular case (optional).

Audio cables

Others / Hospitality:

Bottles of soda water on stage.

A shot of Tequila would be nice.

Lighting conditions: a minimum of lights.

Questions?