

Supplied by promoter:

Live performance:

1 stereo line input on the DJ mixer, an Allen & Heath XONE: 92 / **No Pioneer please.**
/ or 1 Stereo input **direct** to crossover / amplifiers. **Monitor levels must be adjustable.** My output level is limited to 0dB.

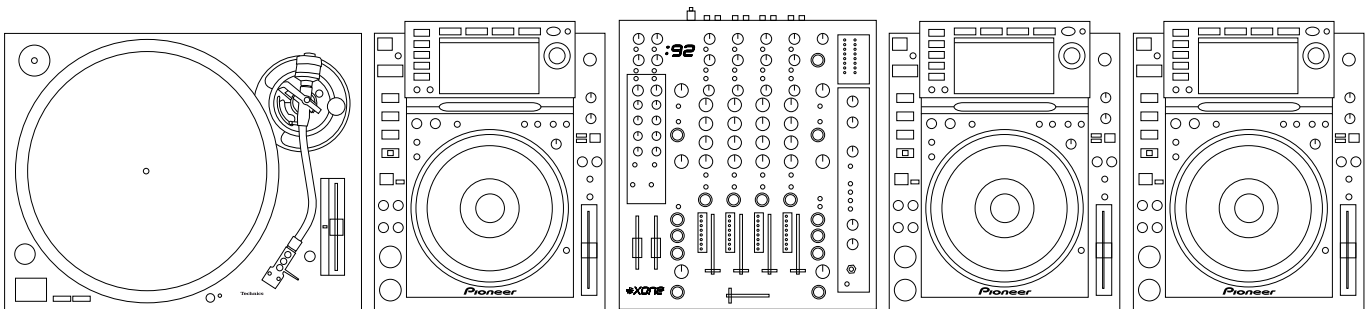
Table / Space 1m high / 2,5m wide / 1,2m deep.

At least 6 Power sockets [220volt].
High quality adjustable stereo monitor system.
Powerful stereo PA system with sufficient sub-bass amplification down to 30 Hz.
Sound technician available during sound-check and performance.
Setup and tear-down time 45 minutes minimum.

DJ performance:

Allen & Heath XONE: 92 / **No Pioneer please.**
3X Pioneer CDJ 2000 NEXUS or NXS 2 + 1 Technics 1200 / 1210 mk2 (Technics not for Datasmok sets).
CDJ's must be linked + player number assigned!
Sufficient isolation for the Technics 1200! Please check for feedback!
High quality adjustable stereo monitor system.
Powerful stereo PA system with sufficient sub-bass amplification down to 30 Hz.
Setup and tear-down time 10 minutes minimum.
Access to back of DJ mixer to connect recording device and / or effect unit.

DJ setup like below:



Others:

Bottles of soda water on stage.
A shot of Tequila would be nice indeed.
Lighting conditions: a minimum of lights.
Note that i won't drive the mixer in red.

Supplied by myself [live performance]:

Laptop
RME Fireface 400UC.
Elektron Analog Rytm.
Acidlab Bassline.
Intellijel Modular case (optional).
Make Noise Modular case (optional).
Audio cables

Questions?

daniel@gloam.nl / Loy@gloam.nl